

First on Scene !

Chief Jon Politis, MPA, NREMT-P
Colonie EMS Department

Jon Politis

- Colonie, NY (Albany)
- EMS Chief
- Paramedic since 1980
- EMT since 1971
- Ski patroller since 1968
- Active on EMS unit since 1971
- EMS "life-er"





Grand Teton National Park

October 28, 2011



Firefighter/EMT Charlotte Adair
Richfield Center, OH Volunteer Fire Dept



Evidence Faults Rescue Workers

By TOM MITCHELL
A Federal Supreme Court just heard evidence Tuesday showing that a driver in a city whose vehicle contributed to pedestrian death should be a survivor of a 2011 Supreme Court ruling.

Emergency services (Police & Fire) in various areas respond to city of England (near) London with Superior Large Police-Response personnel.

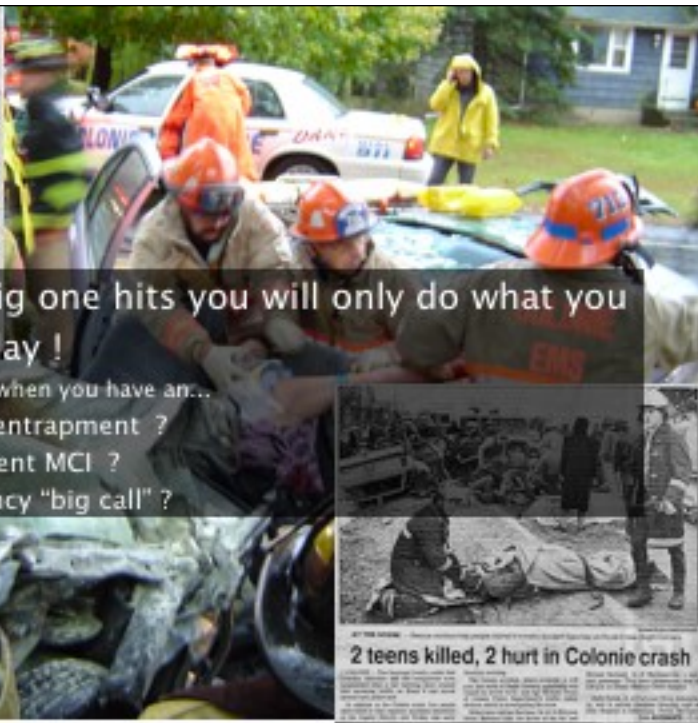
Rescue workers for the "big call" (major crash) which claimed the lives of four people, including two young students College students. The accident at the intersection of First Street and New-Kent Ave. has been called the worst in the city's history.

Tragedy's unfolding from London reports based on the severity of London's local police and details of the emergency.

Doctors who treated victims and are familiar with the case said Tuesday that the experienced dispatcher, who was not present at the scene, had a "big call" (major crash) which claimed the lives of four people, including two young students College students. The accident at the intersection of First Street and New-Kent Ave. has been called the worst in the city's history.

Tragedy's unfolding from London reports based on the severity of London's local police and details of the emergency.

Doctors who treated victims and are familiar with the case said Tuesday that the experienced dispatcher, who was not present at the scene, had a "big call" (major crash) which claimed the lives of four people, including two young students College students. The accident at the intersection of First Street and New-Kent Ave. has been called the worst in the city's history.



•When the big one hits you will only do what you do every day !

–What happens when you have an...

- MVA with entrapment ?
- A 3–4 patient MCI ?
- Multi-agency "big call" ?

2 teens killed, 2 hurt in Colonie crash

First In ???

- YOU set the tone !
- The first five minutes set the stage for the whole incident !
- Learn to set the tone and be in command on every call !



Goals of EMS

- Not get injured/killed
- Right TX - Right PT - Right Time !
- Get the **RED** out!
- Patient Tracking



Those first minutes...

- Response
- Arrival
- Command
- Size-Up
- Triage
- Care
- Transport



First In...Last Out

- If you are the first due unit you are the LAST to leave....
 - EMS Group/Triage functions
 - Work at a Task level till help arrives, then tactical level
 - Command may be transferred to supervisors or other EMS units



Seat Belts Save Lives!

- Always wear your seat belt
 - ✓ Members in the front
 - ✓ Members in the back



Ambulance accident snarls rush-hour traffic

By Mike Grier

It was a routine call, but it turned into a chaotic scene. A white ambulance, en route to a patient, rolled over on its side on a busy highway during rush hour. The accident caused a major traffic jam, with cars backed up for miles. The ambulance crew, who were wearing their seat belts, were able to escape without serious injuries. The incident highlights the importance of seat belt safety for emergency responders.

Both EMTs walked away from this crash.

Both Wore Belts!



March 24, 1997, while driving P-2, the CDA unit was struck by drunk driver. EMT Ray Fish, Jr partially ejected and killed.



Raymond D. Fish, Jr.

*May 21, 1963 -
March 24, 1997*



Highways = High Risk






Death in the line of duty...

A summary of a NIOSH fire fighter fatality investigation April 2, 2003



NIOSH Firefighter Fatality Investigations Involving "Struck By" Incidents:

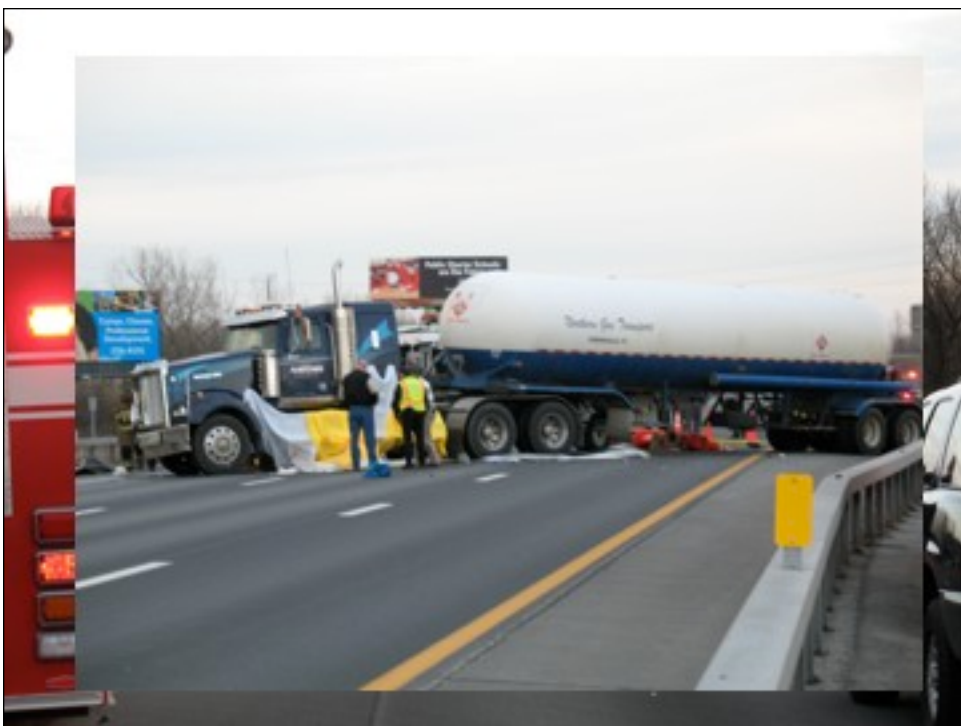
NIOSH Report 99F-27 - August 5, 1999 Incident in Oklahoma - 2 Career firefighters were struck on an interstate, one was killed, and one was left with serious injuries.
 Available on the internet: <http://www.cdc.gov/niosh/fact9927.html>

NIOSH Report 99F-36 - September 27, 1999 Incident in South Carolina - Volunteer firefighter dies after being struck by a tractor trailer truck.
 Available on the internet: <http://www.cdc.gov/niosh/fact9936.html>

American National Standard for High-Visibility Safety Apparel
 ISEA-The Safety Equipment Association, Arlington VA 1999
 Length: 26 pages Language: English
 Reference number: ANSI/ISEA 107-1999
<http://www.safetysystem.com/ansi107.htm>

EMERGENCY RESPONDER HIGHWAY SAFETY WHITE PAPER
<http://www.nspnhsa.org/emrhwspaper.htm>





Do you...

- Limit response to highway emergencies?
- Allow members to respond to the scene in POVs?
- Have risk management policies for highway response?

Arrival...

- Position units
- Size-Up !
 - ✓ Brief arrival report
 - ✓ Establish command
 - ✓ Don PPE
 - ✓ Initial triage sweep



Your initial
Actions will
Set the tone
For the entire
Incident



At Highway Incidents... Protect the scene and your work area !

FIRST Unit protect the scene!

Load down stream!

Rescue

Crash

A-1

A-2

Cones/Flares
Sign

Blocking
Unit



FIRST unit in PROTECTS scene and determines the parking sequence...THEN

Arriving units park in sequence toward egress!

Incident

A-1

A-2

A-3

Placing/Parking your unit



19

PPE...

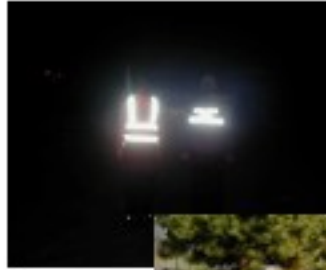
- Could you visit or work at the following without "hard hat" PPE ?
 - ✓ Industrial shop
 - ✓ Construction site
 - ✓ Highway
 - ✓ Utilities



20

Visibility...Safety Vests

- Why silver Scotchlite trim ?
- Much more reflective than any other type
- Increased day and night visibility
- ANSI level 2 or vests



Highway Safety

GEORGIA STATE PATROL
03:12 HOURS
2-16-91
TRAFFIC STOP



Establish command and implement the ICS



The “first in” big dilemma !

- Work at a task or tactical level ?
- Modes of command
 - Establishing command mode
 - Size-up and triage mode
 - Assumption of a command position mode



EMS Incident Modes

- Arriving and establish command
- Initial Size Up and Triage
 - Size-Up
 - Arrival Report
 - Triage
 - Resource Request
 - Task level until the "troops" arrive



Broadcast an arrival report !



Type-Injuries-Entrapment-Resources



Extrication ???



How many patients ? Severity?

Make a triage sweep!

Triaging means using tags!

1	2	3	0
IMMEDIATE	DELAYED	HOLD	DEAD



PRIORITY 1 P-1	
1	IMMEDIATE

DECEASED
IMMEDIATE
DELAYED
MINOR

FRONT	BACK



Do you need air resources?



Get the P-3s to safety!

PRIORITY 3 P-3	
3	Notes
10.0	Destination

Are Additional Resources Needed?



What is your triage "tally" ?



Let's talk triage !

1. Carry tags in your first out bag
2. Get the RED out !



START triage method



- Order those who can walk to go to a collection point: those are the P-3
- That leaves P-1, P-2 and P-0 on the ground.
- Make the initial triage sweep of those who can't walk

START Continued

- Assess Breathing

- None = tag P-0
- > than 30 = tag P-1
- < than 30 = tag P-2



- Assess Radial Pulse

- None = P-1
- Present = P-2



* After positioning airway !

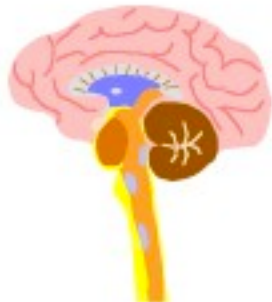


START continued

- Assess LOC

- Alert = P-2
- Altered Mental Status = P-1

- Now re-triage the P-3s !



START Recap...

- Altered mental status
- Radial pulse absent
- Respirations > 30

- Alert
- Radial pulse present
- Respirations < 30

1
IMMEDIATE

2
DELAYED



Get ready for resource arrival !

- 1. Crew Assignment**
- 2. Unit Placement**

**Park like you are planning
to leave !**



Positioning units

In sequence toward egress



A-1

A-2

A-3

A-4

Positioning units

Backed in with clear egress



Principle #1

- Sometimes really good medical care means... really bad tactics !



Principle #2

- Sometimes really good rescue technique means really bad patient care !



45



Too much medical ?



**Protect the patient, control the airway/spine,
treat the patients pain and have the shortest
extrication time possible !**



Patient
Considerations

**Patient Protection
Airway Management
Spinal Protection
Pain Management
Extrication Strategies**



**Move enough metal to extricate...
But don't get carried away !**



**What you do in those first minutes
matters !**

1. Protect yourself
2. Protect the scene
3. Size-up-establish command-arrival report



5. Triage
2. Prepare the scene
3. Get the RED out !

Safety Web Sites





Please be careful out there !

www.JonPolitis.com

